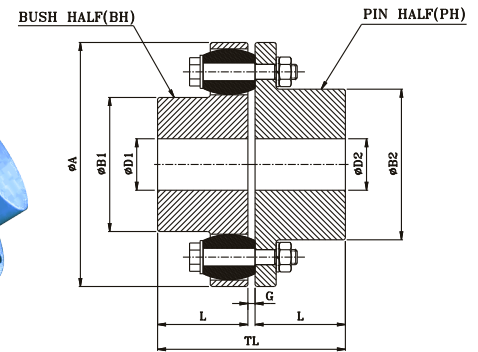
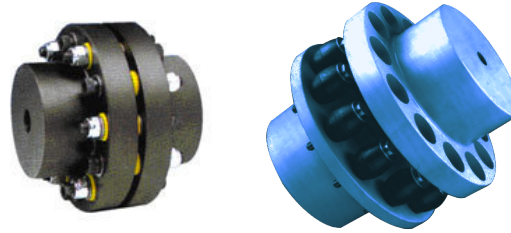


FROM SIZE BVB - 400 ONWARDS



UPTO SIZE BVB - 360

### TECHNICAL DATA

All Dimensions in MM

Coupling Size	Coupling Rating @100RPM						Max. Speed rpm	Min. Bore	Max. Bore		OA	OB1	OB2	L	G	TL	Wt. in kg.	M.I.(WR <sup>2</sup> ) in kgm	Max. Misalignment		
	Synthetic Rubber		Polyurethane		Hytrel				OD1	OD2									Axial (mm)	Radial (mm)	Angular
	HP	KW	HP	KW	HP	KW															
BVB -105-3	1.34	1	2	1.5	3.35	3	7200	11	30	32	105	48	50	45	2-6	94	2	0.0030	2	0.3	1°
BVB -116-4	2.01	1.5	3	2.3	5.03	4	6100	12	39	42	116	60	68	45	2-6	94	2.6	0.0050	2	0.3	1°
BVB -125-4	2.28	1.7	3.4	2.6	5.7	4	5500	14	45	50	125	68	78	50	2-6	104	3.1	0.0070	2	0.4	1°
BVB -144-6	4.42	3.3	6.6	5	11.06	8	4900	18	50	60	144	82	91	55	2-6	114	4.3	0.012	2	0.4	1°
BVB -162-6	7.37	5.5	11.1	8.3	18.43	14	4500	22	60	65	162	89	100	60	2-6	124	7.5	0.030	2	0.4	1°
BVB -178-6	8.98	6.7	13.5	10.1	22.45	17	3800	24	70	75	178	105	115	70	2-6	144	10	0.040	2	0.5	1°
BVB -198-10	17.42	13	26.1	19.5	43.55	33	3400	28	80	90	198	124	135	80	2-6	164	13	0.062	2	0.5	1°
BVB -228-11	28.14	21	42.2	31.5	70.35	53	3000	28	90	100	228	133	146	90	4-10	187	18	0.100	3	0.6	1°
BVB -252-12	42.88	32	64.3	48	107.2	80	2700	38	105	115	252	156	167	100	4-10	207	24	0.17	3	0.6	1°
BVB -285-11	64.32	48	96.5	72	160.8	120	2400	48	115	125	285	170	186	110	4-10	227	35	0.31	3	0.7	1°
BVB -320-12	85.76	64	128.6	96	214.4	160	2100	55	125	135	320	196	212	125	4-10	257	51	0.53	3	0.7	1°
BVB -360-11	124.62	93	186.9	139.5	312	233	1900	65	135	150	360	212	232	140	4-12	288	73	1.02	4	0.9	1°
BVB -400-10	168.84	126	253.3	189	-	-	1700	75	160	170	400	230	250	160	4-12	328	101	1.70	4	1.1	1°
BVB -450-12	261.30	195	392	292.5	-	-	1500	85	180	190	450	260	280	180	4-12	368	137	2.90	4	1.1	0.5°
BVB -500-14	361.80	270	542.7	405	-	-	1350	95	200	210	500	290	310	200	4-12	408	180	4.70	4	1.1	0.4°
BVB -560-10	435.50	325	653.3	487.5	-	-	1200	95	225	235	560	320	350	220	4-8	448	278	10.70	2	1.5	0.3°
BVB -630-12	589.60	440	884.4	660	-	-	1050	100	250	260	630	355	385	240	4-8	486	365	17.4	2	1.5	0.3°
BVB -710-12	1051.90	785	1577.9	1177.5	-	-	950	100	260	270	710	385	425	260	5-9	527	516	33	2	1.8	0.3°
BVB -800-14	1402.98	1047	2104.5	1570.5	-	-	850	100	280	290	800	420	460	290	5-9	587	691	53	2	1.8	0.3°
BVB -900-16	2174.82	1623	3262.2	2434.5	-	-	750	100	305	315	900	465	515	320	5-9	647	927	86	2	1.8	0.3°
BVB -1000-18	2736.28	2042	4104.4	3063	-	-	680	125	320	330	1000	515	565	350	5-10	708	1224	142.8	2	2.0	0.1°
BVB -1120-18	3788.18	2827	-	-	-	-	600	135	350	360	1120	560	610	380	6-11	769	1584	231	2	2.2	0.1°
BVB -1250-20	4841.42	3613	-	-	-	-	550	150	380	390	1250	610	660	420	6-11	849	2070	367.5	2	2.4	0.1°
BVB -1400-20	7437.00	5550	-	-	-	-	490	175	440	450	1400	700	760	480	6-12	969	3060	693	2	2.7	0.1°
BVB -1600-24	10524.36	7854	-	-	-	-	430	200	480	490	1600	770	830	540	6-12	1089	3960	1155	2	3.0	0.1°
BVB -1800-22	13681.40	10210	-	-	-	-	380	225	540	550	1800	870	930	600	8-16	1212	5760	2205	2	3.4	0.1°
BVB -2000-26	18242.76	13614	-	-	-	-	340	250	600	610	2000	960	1020	660	8-16	1332	7020	3255	2	3.8	0.1°

● PH = Pin Half (Drive) upto size 360      ● BH = Bush Half (Driven) upto size 360

### SPARE PARTS

All Dimensions in MM

Coupling SIZE	Pin Half Part No.	Bush Half Part No.	Pin + Washer Part No.	Bush Part No.	No. Of Pin-Bush Assy./Coupling	Nut Size
BVB -105-3	BVB-105-3/1	BVB-105-3/2	P-2	B-2	3	M8
BVB -116-4	BVB-116-4/1	BVB-116-4/2	P-2	B-2	4	M8
BVB -125-4	BVB-125-4/1	BVB-125-4/2	P-2	B-2	4	M8
BVB -144-6	BVB-144-6/1	BVB-144-6/2	P-2	B-2	6	M8
BVB -162-6	BVB-162-6/1	BVB-162-6/2	P-3	B-3	6	M10
BVB -178-6	BVB-178-6/1	BVB-178-6/2	P-3	B-3	6	M10
BVB -198-10	BVB-198-10/1	BVB-198-10/2	P-3	B-3	10	M10
BVB -228-11	BVB-228-11/1	BVB-228-11/2	P-4	B-4	11	M14
BVB -252-12	BVB-252-12/1	BVB-252-12/2	P-4	B-4	12	M14
BVB -285-11	BVB-285-11/1	BVB-285-11/2	P-5	B-5	11	M16
BVB -320-12	BVB-320-12/1	BVB-320-12/2	P-5	B-5	12	M16
BVB -360-11	BVB-360-11/1	BVB-360-11/2	P-6	B-6	11	M20
BVB -400-10		BVB-400-10	P-7	B-7	10	M20
BVB -450-12		BVB-450-12	P-7	B-7	12	M20
BVB -500-14		BVB-500-14	P-7	B-7	14	M20
BVB -560-10		BVB-560-10	P-8	B-8	10	M36
BVB -630-12		BVB-630-12	P-8	B-8	12	M36
BVB -710-12		BVB-710-12	P-9	B-9	12	M42
BVB -800-14		BVB-800-14	P-9	B-9	14	M42
BVB -900-16		BVB-900-16	P-9	B-9	16	M42

# B.V. Transmission Industries

Unit 18, Khyati Industrial Estate,  
Laxmi Nagar, Link Road, Goregaon West,  
Mumbai - 400104, Maharashtra, India

Tel : +91- 22-28762345  
Tel : +91- 22-28767941  
☎ : +91- 93247 18035  
☎ : +91- 98206 92004

email :: sales@bvchains.com  
bvchain@gmail.com web ::  
www.bvchains.com  
web :: www.jawcouplings.com